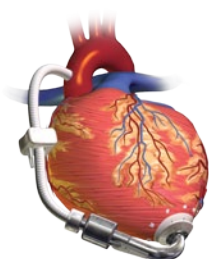


INTRODUCING

HeartAssistRemote™

Worldwide Monitoring





HEART 
Assist 5[™]
CE 0086

INTERNATIONAL

Emergency Technical and Clinical Support for Medical Professionals

+44 132-386-2836

At the prompt, select emergency and you will be transferred to our hotline.

Patients should contact their healthcare provider for emergencies.

MicroMed BV

Erfstraat 10a
5405 BE, Uden
The Netherlands
+31 413-245-058

Non-Emergency Technical and Clinical Support

support@micromedcv.com

UNITED STATES

Emergency Technical and Clinical Support for Medical Professionals

1-877-332-2539

Patients should contact their healthcare provider or call 911 for emergencies.

MicroMed Cardiovascular, Inc.

MicroMed Technology, Inc.
8965 Interchange Drive
Houston, Texas 77054

micromed@micromedcv.com

Phone: (713) 838-9210

Fax: (713) 838-9214

Non-Emergency Technical and Clinical Support

support@micromedcv.com

L00307 rev B

Introducing the HeartAssistRemote™ Monitoring System from MicroMed

A Remote Monitoring and Data Reporting System which allows for the frequent transfer of secure, password-protected LVAD performance data via the HeartAssistRemote Global Communication Network of servers.

Remote monitoring information is delivered to the authorized clinician and caregivers alerting them to key changes in HeartAssist 5 LVAD performance that may require further attention.

The HeartAssistRemote Monitoring System is there when you need it and provides valuable feedback and supervision over your HeartAssist 5 patients. This allows the LVAD clinician to provide a higher level of care with no additional investment of time or cost.

MicroMed HeartAssistRemote System Components:

Patient Controller

An external controller worn by the patient which powers and communicates with the implanted HeartAssist 5 LVAD. It collects both real-time and stored operating parameters of the HeartAssist 5 LVAD.



HeartAttendant™

A communication and display terminal that functions as a power supply when the Patient Controller is plugged in. Patient plugs the Controller into the HeartAttendant during times of rest and sleep. Connection of the Controller to the HeartAttendant allows for real-time operating parameter data to be transmitted to a MicroMed Server.



HeartAssistRemote Global Network

An integrated global communications network. Note: Information can only be transmitted when the Controller is connected to the HeartAttendant.



HeartAssistRemote Monitoring Web-based Application

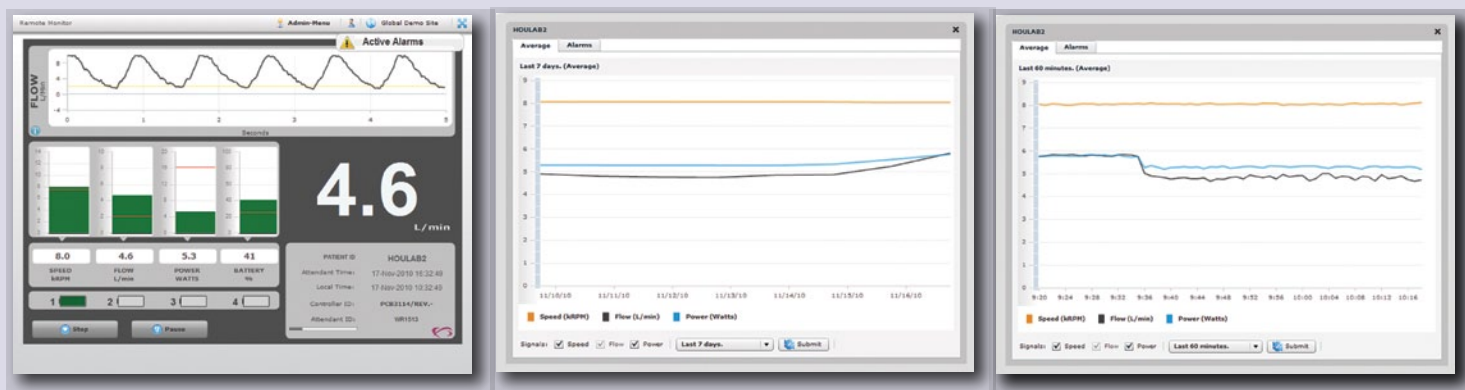
Receives and displays HeartAssist 5 LVAD performance data within a MicroMed Server that can be accessed 24 hours/365 days a year via the web by authorized LVAD clinicians.



HeartAssistRemote Benefits

- **Increases Clinical Efficiency**...provides the caregiver with the added certainty of knowing they will be notified if a significant change in the patient's HeartAssist 5 LVAD operating status has occurred, thus increasing vigilance while simplifying LVAD Patient Management.
- **Improves Patient Safety and Reassurance**...gives HeartAssist 5 Patients and Families peace of mind to lead a more active life.
- **Increases Patient Convenience**...reduces unnecessary trips of Patients and Families for clinical visits. Simple problems can be resolved over the phone.
- **Generates Economic Savings**...reduces unnecessary testing and clinical readmissions.
- **Enables Delivery of Exclusive FlowAccurate™ Flow Monitoring**...direct, real-time blood flow measurement from the HeartAssist 5 Flow Probe.
- **Privacy-Protected System with Global Coverage**...worldwide network allows patients to travel and still be able to transmit HeartAssist 5 LVAD performance data whenever they are within surveillance coverage of the HeartAssistRemote Global Network.

How HeartAssistRemote™ Works:



Blood Flow, Speed and Power graphs allow early recognition before problems become acute.

FlowAccurate™ Measurement Diagnostics and Observations

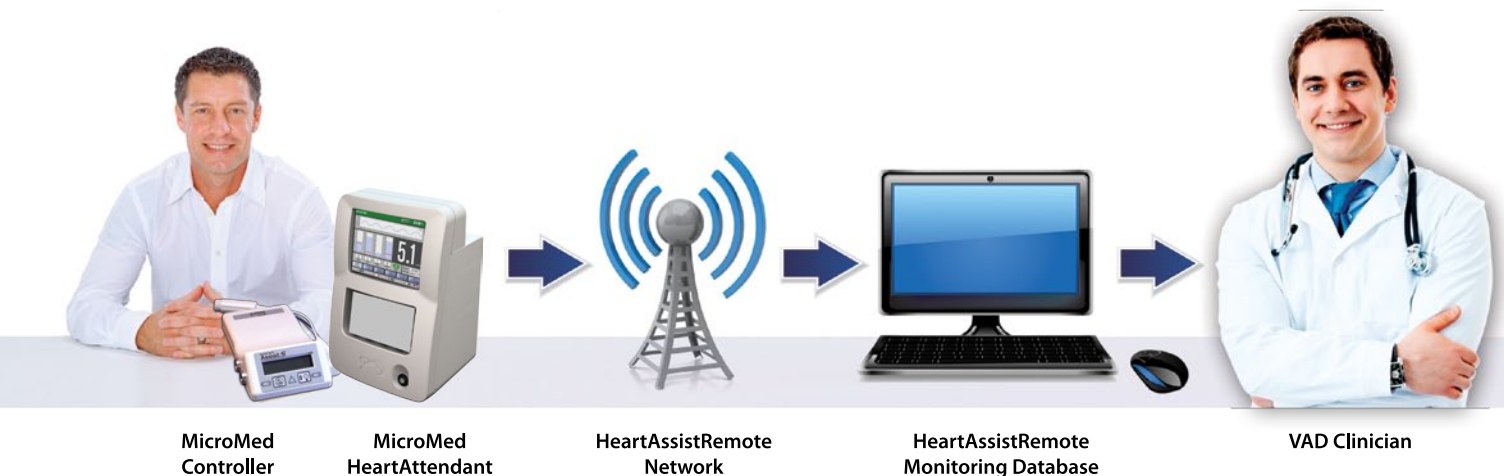
Offers the Ability to Observe in Real-Time and Picture Format: Pump speed, blood flow and power consumption. The real time accurate measurement of blood flow is possible due to the exclusive HeartAssist 5 Flow Probe.

Pump Speed, Blood Flow & Power Consumption: Data is sampled continuously and averaged over a short interval. In the event of an alarm, a picture of the event-related data is captured. This allows the event-related wave forms to be viewed.

Operating Trend Changes: Any significant change in speed, blood flow or power can be easily detected. Once recognized as an operation exception, an alert will be sent.

Clinical Utility: May aid clinician in early recognition of conditions which require closer attention.

How the MicroMed HeartAssistRemote Monitoring System works:



Certified HeartAssist 5 VAD Center completes a Patient Activation Form to enroll them in the **HeartAssistRemote** Program. Specific Caregiver/LVAD Coordinator contact information is programmed so that specifically authorized individuals can be notified of alerts and alarms.

The **HeartAssistRemote** System will notify the authorized caregiver by email message as to any data exception alert outside the HeartAssist 5 Patient's normal operating parameters.

For additional information, please contact MicroMed

U.S.: 713-838-9210 Europe: +31 413-245-058